

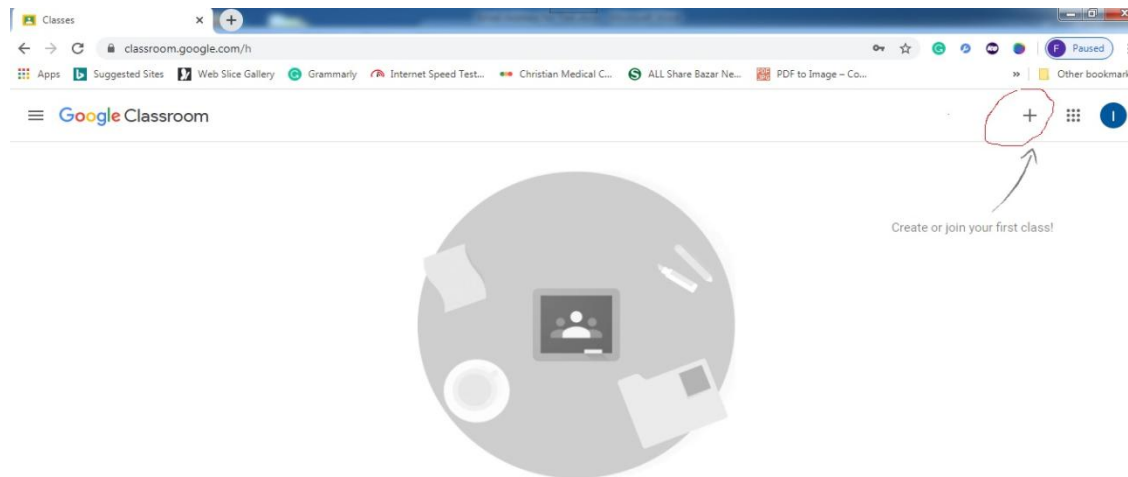
JOIN Google Classroom (for students):

youtube Link: <https://www.youtube.com/watch?v=IelB6mD0yhk>

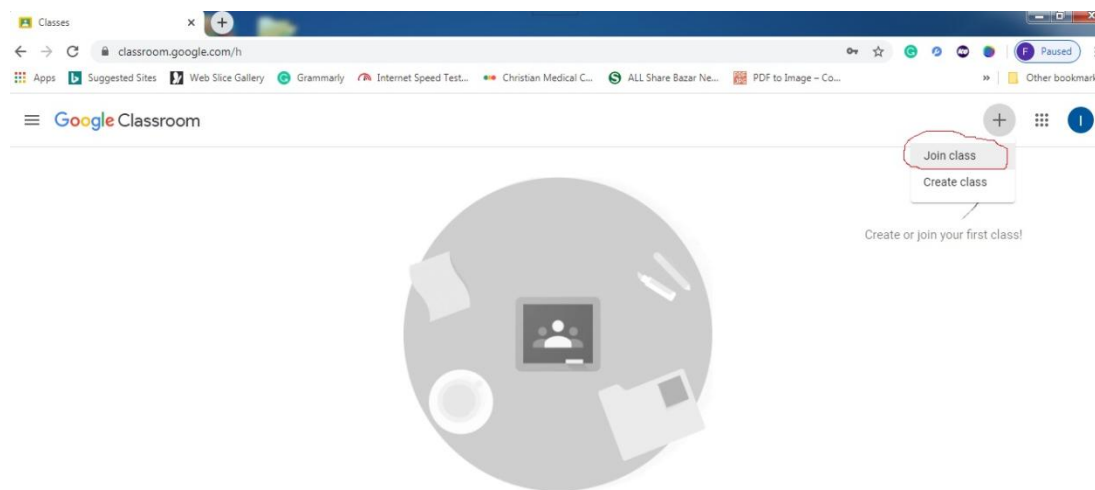
Students are requested to do the following steps to join and use the Google Classroom:

1. Sign-In to your Gmail Account [at <http://gmail.com/>]

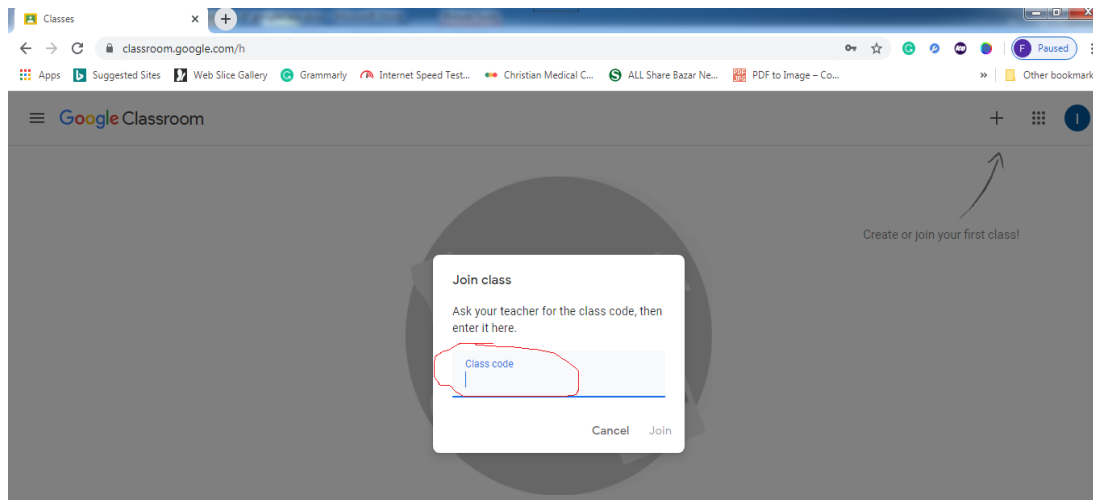
2. Then needed to go to <https://classroom.google.com/> and click on (+) sign



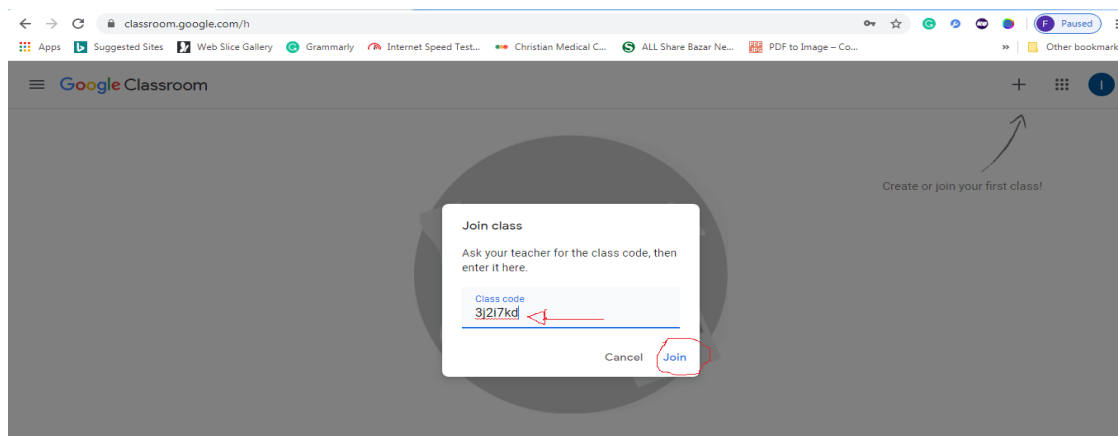
3. Click on **Join class**



4. Type the **class code**, which is provided by your course teacher. [like: 3j2i7...]



5. Click on **join** after type the class code.



Note 01: Another way by which a student can join the Google classroom:

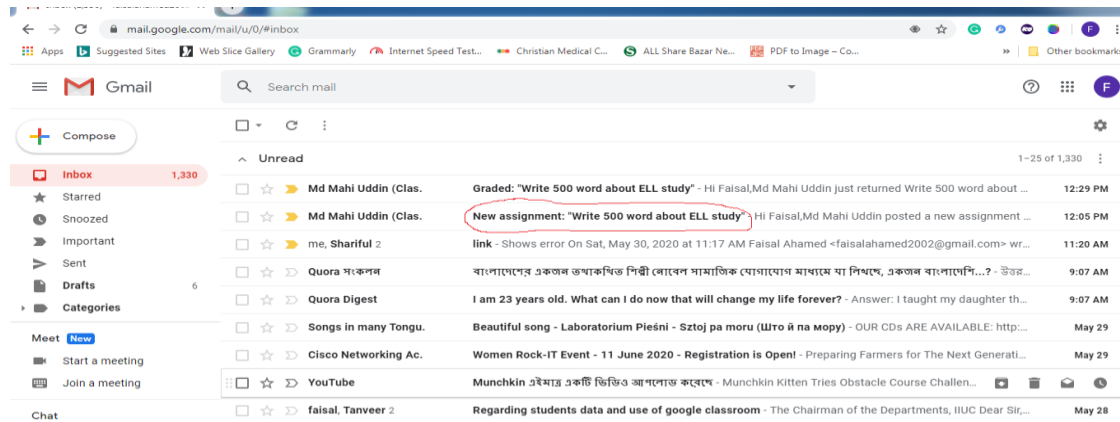
If a teacher send a link(invitation) to the student's email, then he/she could easily join the Google classroom by clicking the link(**join**) from his/her email.

Note 02: Smart Mobile Phone: Students who will use this device may install the Google Classroom apps from Play Store to join the classroom easily:

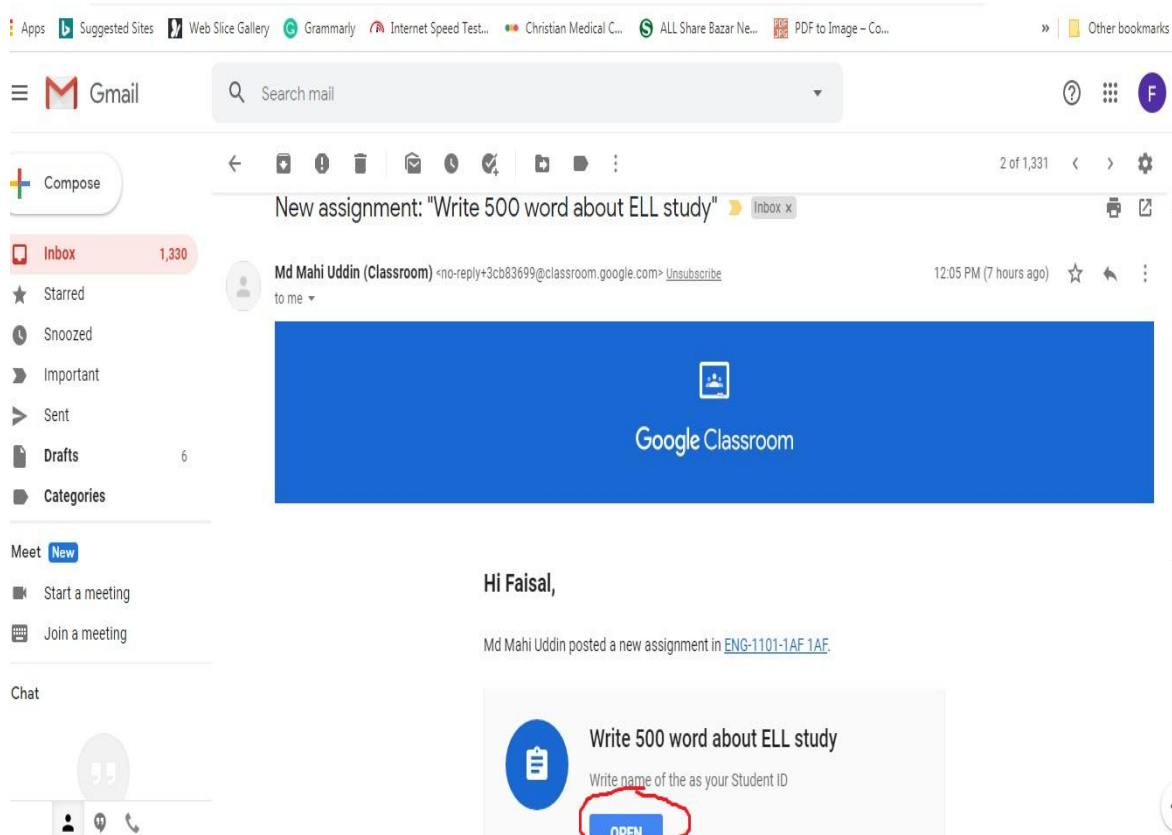
(From Mobile Phone) Go to **Play Store**=> Search by **Google Classroom**=> Click **Open** (for installation)

Another way to enter into the Google Classroom:

=> check & open the email which was sent by respective course teacher.

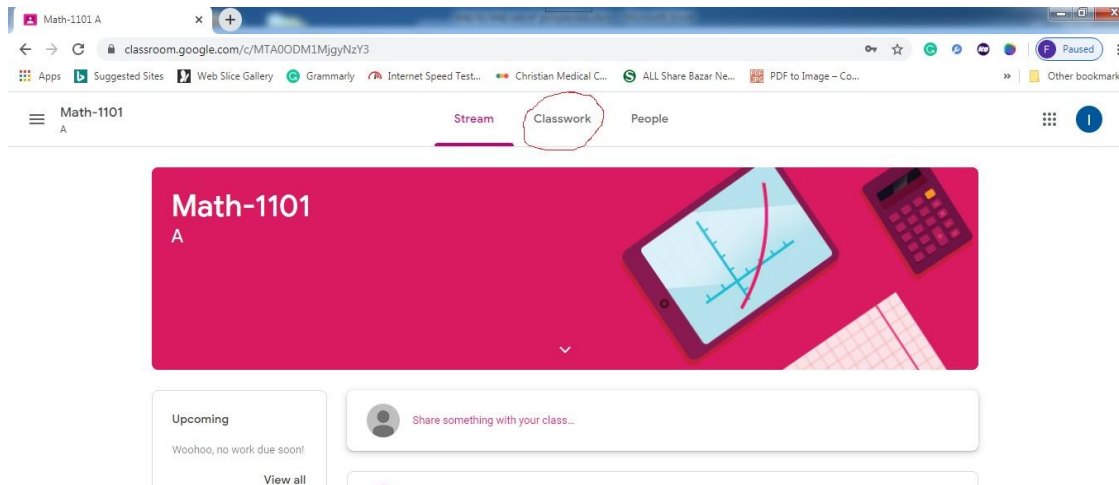


=> Then click 'OPEN' to enter into the Google Classroom.

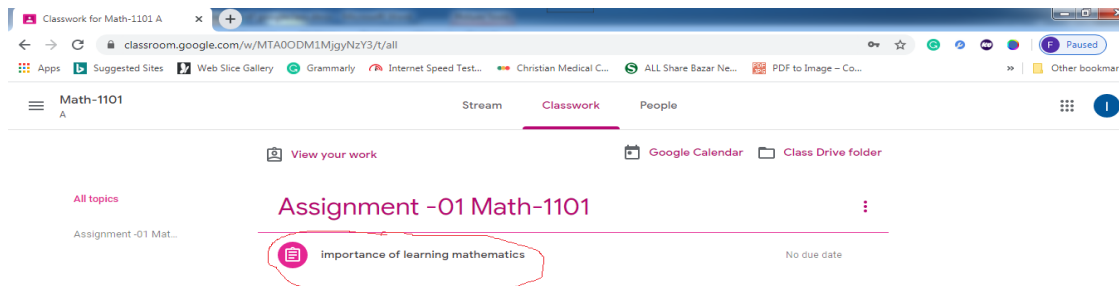


Assignments submission to the course teacher using Google Classroom:

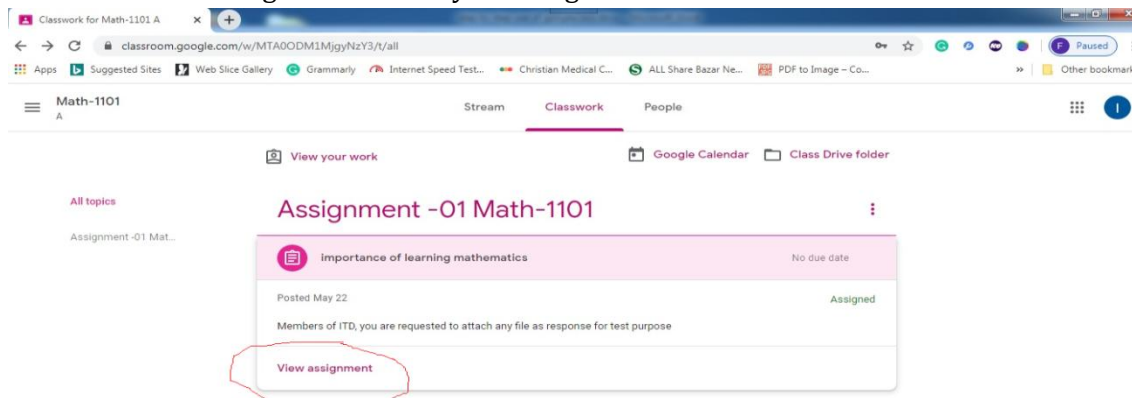
6. Click on **Classwork**



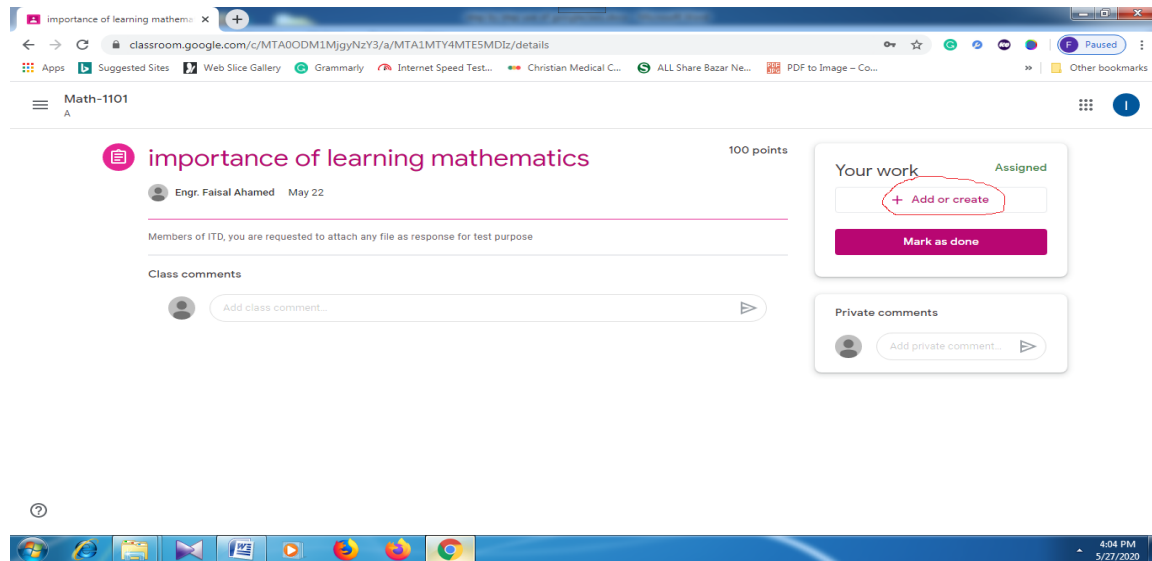
7. Then click on your assignment



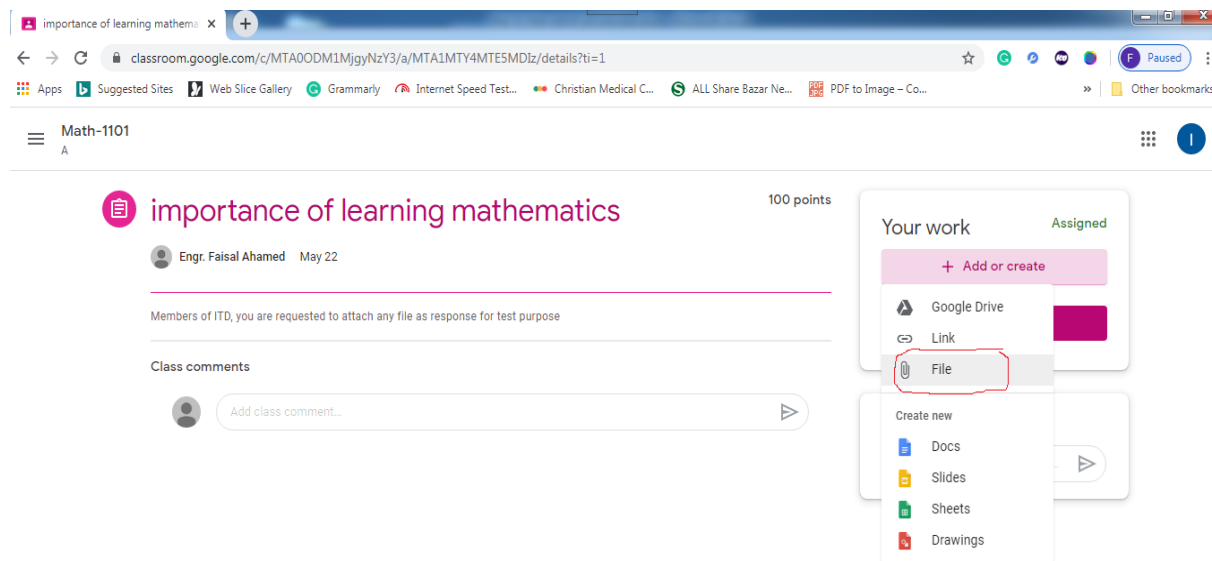
8. Click on View assignment to find your assignment.



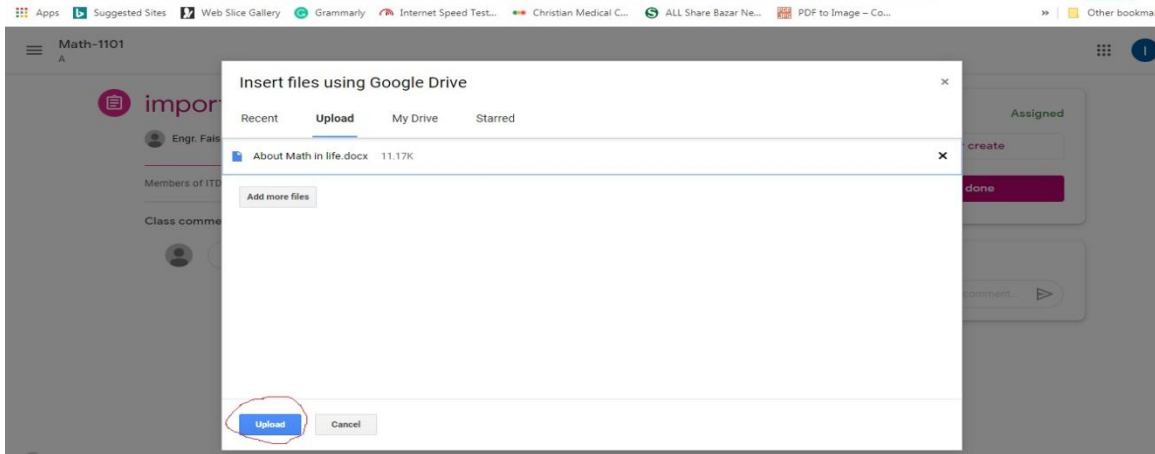
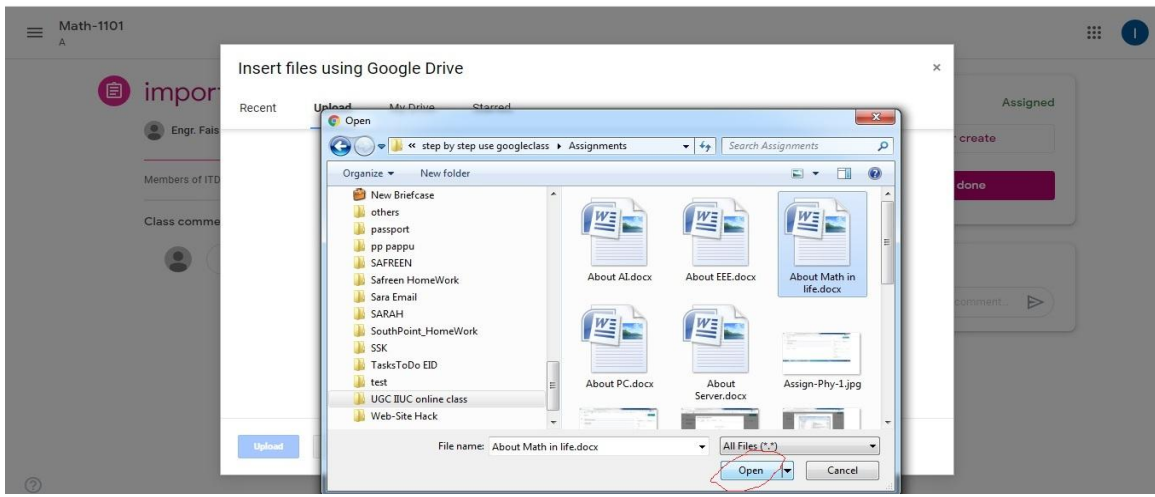
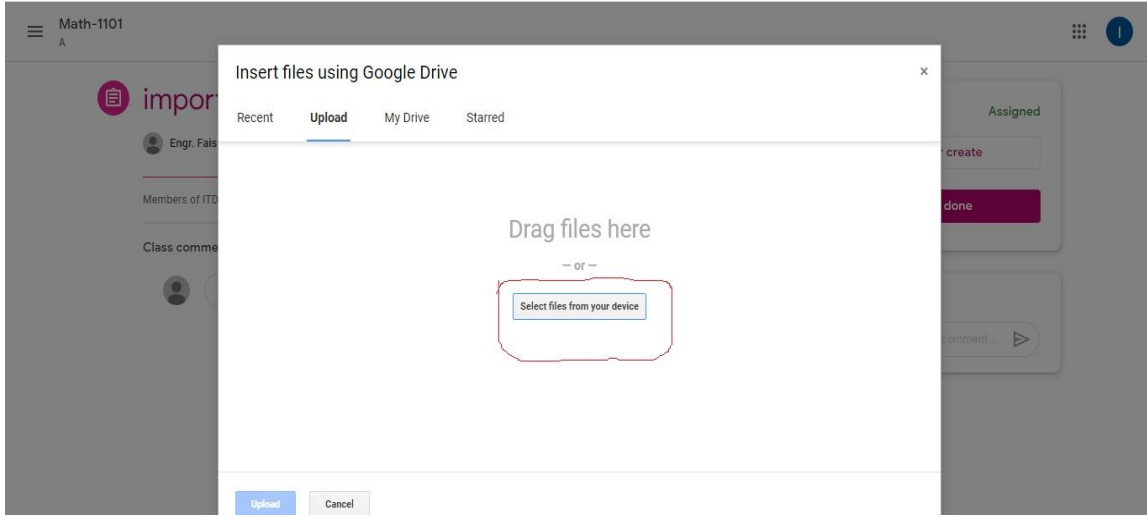
9. Details about assignment would be available here. Now, you can submit your assignment (which was already prepared as doc/image/etc) by clicking on '+ Add or create'



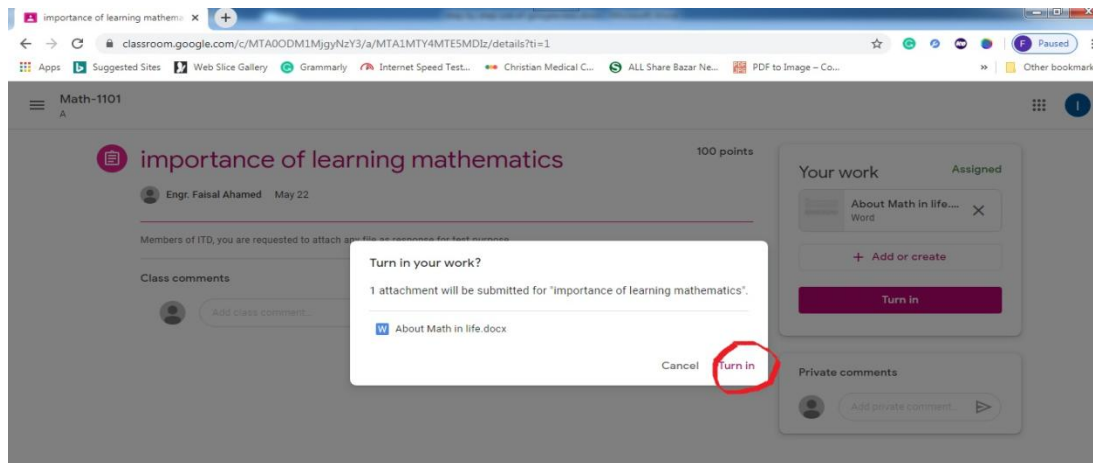
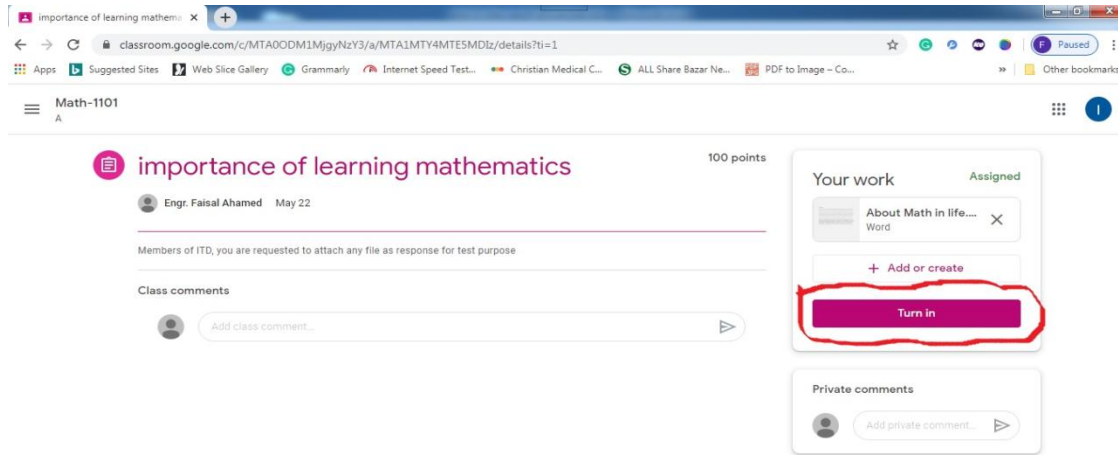
10. Click on File to find/search/attach/upload your file from your device/laptop.



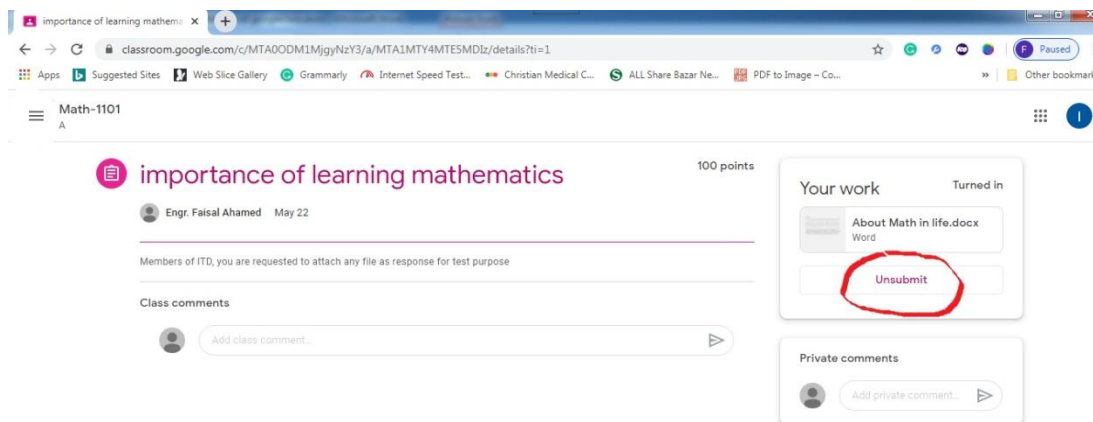
11. Then click on 'Select files from your device', find your file, select it and Click on 'Open'. Now you can add more files or click 'Upload' as per following images:



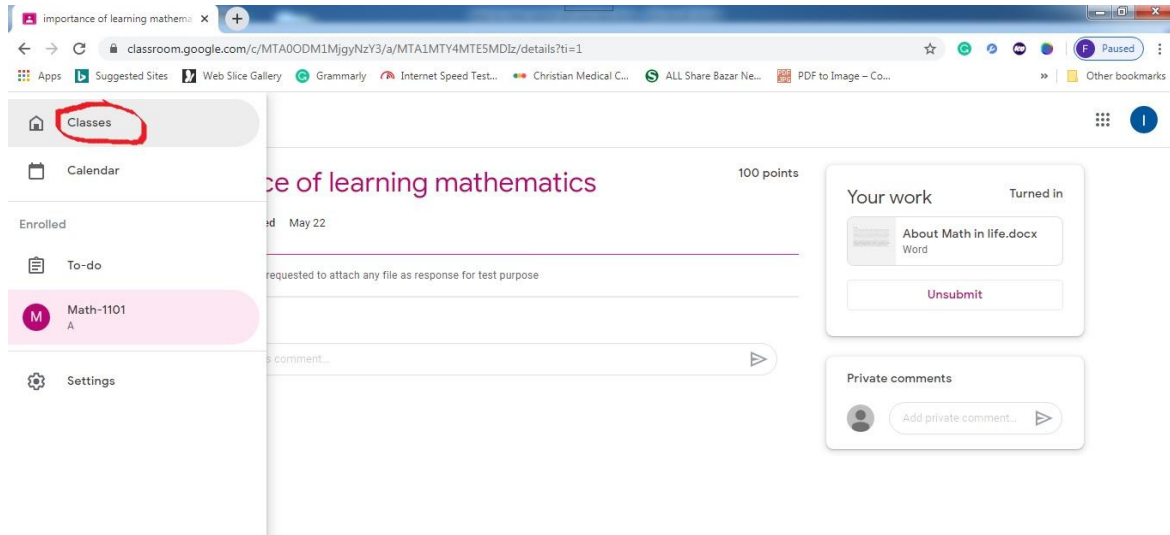
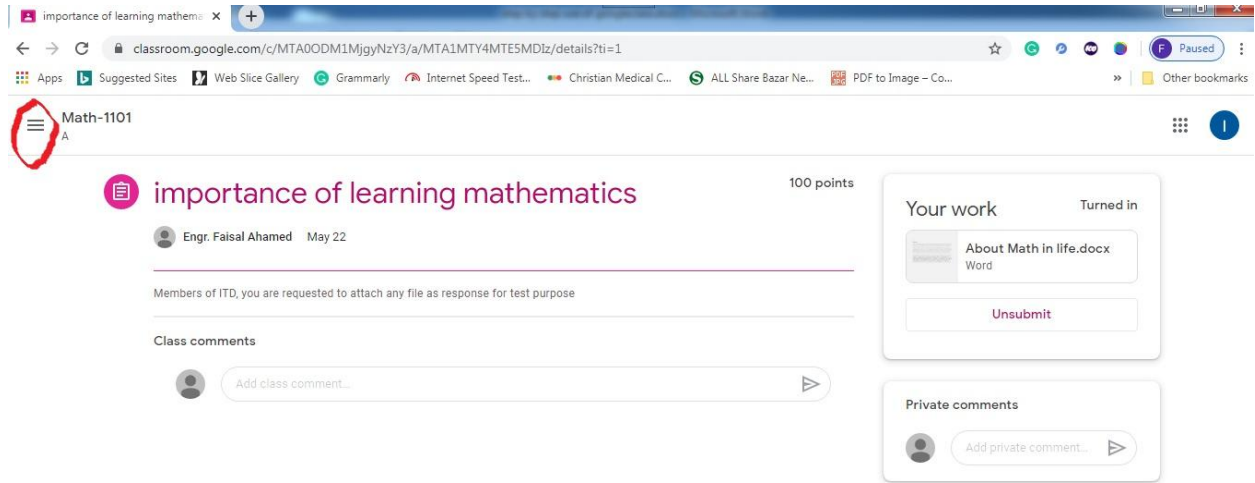
12. Now click on '**Turn in**' to submit your assignment.



13. In case, if you submit a wrong assignment, then click on '**Unsubmit**'. Now, again, you may submit your correct assignment. But, in this case, students are advised to inform their course teacher for re-submission to avoid any confusion regarding duplication.



14. Now you may **log out** or you can go to another class/course to submit assignments of that course/class by clicking on red marked icon and then classes



Thank you

ITD, IIUC